

## Christian Aid Ireland ICSP Final Evaluation: **Procurement Questions and Responses**

**25<sup>th</sup> March 2026, version 2**

| # | Question  | Response   |
|---|---|--|
| 1 | <p>Could you kindly clarify whether there are any additional documents available for bidders (such as detailed programme logframes, theories of change, or MEAL frameworks) that could help us better understand the evaluation scope?</p> <p>Could you share the full logical framework for Stream 1?</p>  | <p>We are happy to share here the Theories of Change for Streams 1 and 2 (see Annex 1 and Annex 2).</p> <p>Please note that our Climate Change objectives were developed after these ToC were created, and so that strand of work is not fully represented within those ToCs.</p> <p>If there are further specific questions we can answer regarding scope we will be happy to respond to them. Please note that we do not expect a 'final' methodology from consultants within the proposal; we anticipate that upon selection the successful consultants will have opportunity to review the programme documentation in-depth and reshape the methodology in accordance with scope.</p> <p>We will share the country-specific Results Frameworks with the successful evaluation team but Annex 3 has a broad outline of the RF structure for Stream 1.</p> |
| 2 | <p>Lot B evaluation scope requires primary data collection (DRC and South Sudan are the two countries proposed by CAI). However, the budget does not include international travel-costs.</p> <p>Does CAI have independent in-country evaluators who can perform these tasks, or does the CAI evaluation team foresee the primary data collection to be done virtually? Or is there another specific data-collection methodology envisioned by CAI that does not require international travel?</p> | <p>This is correct. Due to the limited budget, our intention is to engage a consultancy team with existing connections or presence within South Sudan and DRC to conduct data collection. We do not anticipate solely relying on virtual data collection.</p>  |
| 3 | <p>We note that in the Terms of Reference it is mentioned that international travel will not be funded under this evaluation. We would like to ask for clarification on this.</p>   | <p>Yes, we would be open to regional travel being covered under this budget.</p>   |

| # | Question  | Response   |
|---|---|--|
|   | <p>Would this rule also apply to regional travel within South America?</p> <p>In the tender guidance, it says that Christian Aid does not anticipate funding international travel as part of the evaluation. Would Christian Aid consider funding travel within a region?</p>   | <p>For clarity, we felt it was out of the scope of the budget to fund a single consultant to travel internationally to all locations, but some regional travel would be feasible.</p>  |
| 4 | <p><b>Data Collection Modalities:</b> Would Christian Aid consider a mixed approach to data collection, where in-person fieldwork is conducted in one country (e.g., South Sudan) while engagement in other contexts (e.g., Myanmar or potentially DRC depending on access) is conducted remotely through online consultations?</p> | <p>We anticipate remote engagement with all of our programmes and in-country data collection with a sample only. However we would wish that sample to be sufficiently large, and not rely on remote data collection for many contexts, in lieu of in-person.</p>   |
| 5 | <p>As we are planning to submit proposals for both Lots A and B, can we present the technical and financial proposals for both Lots as one combined project?</p> <p>Are we permitted to submit <b>a single technical and financial proposal</b> covering the following countries?<br/><i>(lists countries)</i></p>                  | <p>We welcome a combined technical and financial proposal, as long as they respond to the ToRs. Where an activity or budget line responds to both Lot A and B it may help to provide a suggested Level of Effort/ focus.</p> <p>CAI welcomes a single technical and financial proposal for either Lot A or Lot B or Lots A and B combined.</p>   |
| 6 | <p>If both lots are awarded to the same bidder, is there an expectation for coordination or synthesis across the two lots?</p>  | <p>In relation to coordination across the two lots, Following completion of both evaluation reports, CAI will commission a final consultancy which will bring together findings from both evaluations (plus findings from an additional evaluation of Stream 4 – see above) into a single report. This Portfolio-level report deliverable, and associated budget are outside the scope of this Terms of Reference. The successful evaluation team for Lot A and/or Lot B is required to commit 1–2 days to provide inputs for the cross-stream report. These teams will also be invited to bid</p> |

| # | Question   | Response   |
|---|--|--|
|   |  | <p>for the full cross-stream report, which will be managed under a separate tender, Terms of Reference, and contract.</p> <p>If a single bidder is selected across the two lots some information-sharing across streams would be anticipated, to leverage the benefits of a single organisation conducting the assignment.</p>   |
| 7 | <p>How should bidders differentiate their approach for Lot 2 compared to Lot 1 in terms of scope, analytical depth, and expected outputs?</p>  | <p>We are keen that the bidder proposes a methodology specific to Lot B that responds to the Stream 2 and 3 programmes described therein, as well as the differing contexts, and resources available. We are keen to see what is proposed by bidders but would not regard a methodology in a proposal as final. We will work with the successful consultancy team to refine and define the scope, analytical depth and expected outputs.</p>   |
| 8 | <p><b>Engagement in Non-Fieldwork Countries:</b> For the country programme where in-country data collection is not conducted, are there any expectations regarding the minimum level of engagement with programme teams?</p> <p>What level of engagement are you expecting for non-sampled country programmes covered under Streams 1 and 2?</p>                     | <p>Without trying to inform the methodology, at a minimum we anticipate:</p> <ul style="list-style-type: none"> <li>○ document review and remote engagement with programme teams, and potentially partners, to validate and further explore some of this existing evidence/reframe in response to evaluation questions.</li> <li>○ Under Lot A, we would also anticipate some engagement with our partner organisations in relation to 'Objective 3 - Partner Agency'.</li> <li>○ We would expect some remote engagement with programmes as evaluative conclusions are being formulated, for sharing and discussion purposes.</li> </ul> |
| 9 | <p><b>Programme Country Coverage:</b></p> <p>Can you please share with us the list of the 10 countries that will be covered in the evaluation of the ICSP programs for LOT A &amp; B</p> <p>Based on programme implementation thus far, are there any countries that Christian Aid Ireland would prioritise or consider essential to include in the primary data</p> | <p><b>Answer:</b> Below is the list of countries covered under Stream 1 and Stream 2. In the Terms of Reference we propose certain countries are sampled but are open to discussing this (based on feasibility) with the successful team.</p> <p>Lot A - Stream 1:</p> <ol style="list-style-type: none"> <li>1. Burundi</li> <li>2. Colombia</li> <li>3. Guatemala &amp; El Salvador (S)</li> </ol>   |

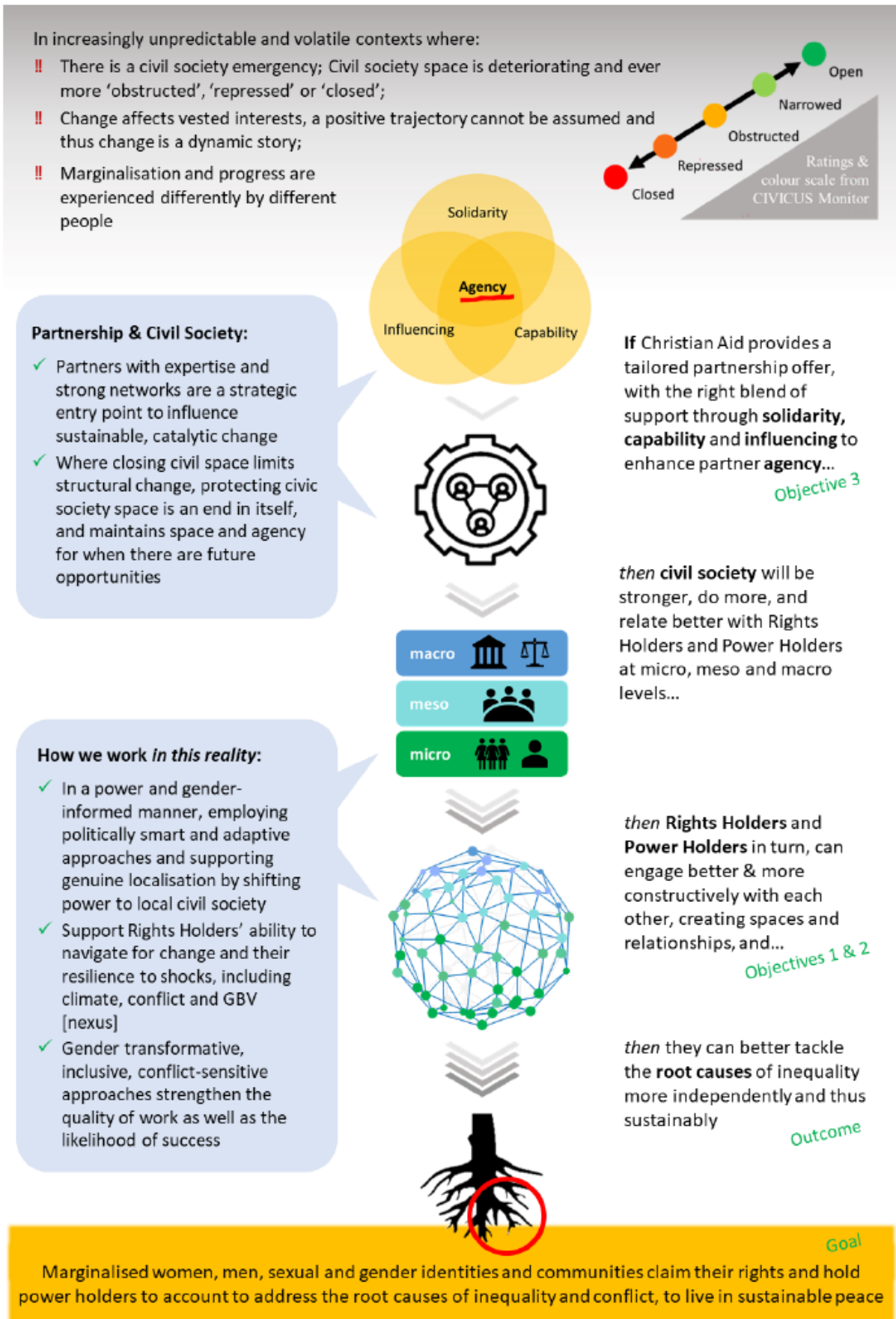
| #  | Question   | Response   |
|----|--|--|
|    | <p>sampling, particularly where there has been significant programme investment or strategic engagement?</p>   | <p>4. Israel occupied Palestinian territory (S)</p> <p>5. Sierra Leone (S)</p> <p>6. Zimbabwe (S)</p> <p>Lot B - Streams 2 and 3:</p> <p>7. DRC (S)</p> <p>8. Myanmar</p> <p>9. South Sudan (S)</p> <p>We are open to discussing and agreeing sampling with the successful Evaluation team, being aware that they will have different global presence. As per the ToRs, the countries we prioritise for sampling at present, for a variety of reasons are:</p> <ul style="list-style-type: none"> <li>• Lot A: Guatemala-El Salvador, Zimbabwe or Sierra Leone and loPt (West Bank and Israel only)</li> <li>• Lot B: DRC and South Sudan</li> </ul> |
| 10 | <p>Could you please confirm the specific townships or locations that Christian Aid proposes as the sample sites for primary data collection in each of the three countries (DRC, South Sudan, and Myanmar) for Stream 2?</p> <p>Additionally, could you provide the estimated number of beneficiaries in each of these proposed communities, particularly those affected by the humanitarian crisis?</p> | <ul style="list-style-type: none"> <li>• <b>DRC:</b> Five Health Areas in Kalehe Territory, South Kivu Province. <i>Approximate programme reach 11,000</i></li> <li>• <b>Myanmar:</b> Programme locations facing access challenges <i>Approximate programme reach 13,000</i></li> <li>• <b>South Sudan:</b> Two payams in Aweil County, Northern Bahr el Ghazal State <i>Approximate programme reach 13,000</i></li> </ul>   |
| 11 | <p><b>Country Team Support:</b> Could you confirm whether Christian Aid country teams would support</p>  | <p>Yes, our involvement would be necessary, particularly for consultation with non-Christian Aid actors.</p>   |

| #  | Question   | Response  |
|----|--|---|
|    | <p>coordination and scheduling of consultations during the evaluation process?</p> <p>In-country focal points – Will the consultant be assigned a focal point at each of the field locations? This would be important for planning logistics, coordinating field access, and ensuring smooth data collection operations on the ground.</p> | Yes   |
| 12 | What are the expectations regarding fieldwork (including priority countries, access constraints, and feasibility of remote data collection)  | <ul style="list-style-type: none"> <li>We anticipate the evaluation team would be present in at least a sample of the countries (please see proposed countries within the ToRs, but these are open to discussion). We anticipate remote engagement with all CA Country offices, and some partner organisations. In general we do not anticipate remote data collection from communities.</li> </ul> |
| 13 | Enumerators' recruitment – Is the consultant expected to independently recruit and hire enumerators, or is Christian Aid able to facilitate this through existing in-country networks or partner organisations?  | Should the consultant require enumerators, they will be expected to independently recruit and hire them.  |
| 14 | Data collection equipment – Will enumerators have access to tablets or other data collection devices provided by Christian Aid (or local partner) in country?  | <ul style="list-style-type: none"> <li>Should the consultant require enumerators, they will be expected to plan all resources the enumerators require. There may be some options to leverage existing programme resources but these should not be built into the proposal.</li> </ul>   |
| 15 | When will outcome-level assessment data for Objectives 2 and 4 of Stream 2 be available, and how should bidders account for any gaps or delays in the analysis?  | Please note that the outcome level assessments are specific to Stream 2, Lot B. The programme will discuss scheduling of same with the evaluation team to avoid overlap.  |
| 16 | Are there specific methodological expectations for Lot 1, particularly regarding the use of contribution analysis or similar approaches?   | Please see the methodological considerations outlined in the ToRs for Stream 1. "It is anticipated that the methodology will be primarily qualitative, and will leverage the cases of change methodology being implemented by the programme in 2026   |

| #  | Question   | Response  |
|----|--|---|
|    |  | (whilst maintaining independence). Methodologies used will be systems aware and appropriate for complex contexts and take into account the diverse perspectives of programme stakeholders. " Our understanding of contribution analysis and similar approaches is that they would be appropriate for the evaluation.  |
| 17 | <p><b>Methodology:</b> Can you share the 2025 methodological guidance on Cases of Change (CoC)?</p> <p>The TOR refers to the <b>Cases of Change</b> methodology which has already been used to produce <b>21</b> cases with a further <b>18</b> to be produced during 2026. As these are expected to form the backbone of the evaluation, can you outline how the timetable for the production of the remaining 18 might align with the evidence gathering and interpretation phase of the evaluation?</p> <p>What is the expected timeline for the additional 18 Cases of Change currently under preparation, and to what extent should they be incorporated into the evaluation?</p> | <p>The CAI-specific guidance for cases of change is currently undergoing revision as we learn more about this methodology. CAI's approach is Adapted from the methodology described in '<a href="#">No Royal Road</a> Finding and following the natural pathways in advocacy evaluation', Jim Coe and Rhonda Schlangen.</p> <p>Our preference is that this timetable, and aspects of the methodology, would be agreed in collaboration with the Evaluation Consultancy team - so that there is scope to explore how the Evaluation consultancy team may be engaged in the production/ validation of the cases. A small number of cases may have commenced prior to the commencement of the evaluation.</p> <p>Our preference is that this timetable, and aspects of the methodology, would be agreed in collaboration with the Evaluation Consultancy team - so that there is scope to explore how the Evaluation consultancy team may be engaged in the production/ validation of the cases. A small number of cases may have commenced prior to the commencement of the evaluation.</p> |
| 18 | If any nationality could bid for this opportunity advertised?  | Yes, any nationality can apply for this opportunity. As part of our appraisal of tenders we will be focussing on ability to conduct evaluation in the programme countries.  |
| 19 | We would appreciate <b>your clarification regarding eligibility</b> . While we have substantial experience in fragile and crisis-affected contexts, we have not previously implemented projects in the specific ICSP target countries outlined in the Terms of Reference.  | In terms of eligibility, this does not exclude you from applying. <i>Among other criterion</i> , the proposals will be rated based on ability to conduct evaluation activities in the selected countries as well as experience of those country contexts.   |

| #  | Question  | Response  |
|----|---|---|
| 20 | We would appreciate it if you could kindly share the templates for the Supplier Reference Check Authorisation Form and the Bidder Declaration Form,   | <ul style="list-style-type: none"> <li>• Supplier Reference Check: <a href="#">Supplier Reference Check   Christian Aid Ireland</a></li> <li>• Bidder Declaration Form: <a href="#">Bidder Declaration Form   Christian Aid Ireland</a></li> </ul>  |
| 21 | <p>Can you please clarify the Irish VAT.</p> <p>As a UK based organisation, UK VAT does not apply. Our current understanding is that Christian Aid Ireland is not VAT registered. Could you please suggest how VAT should be treated by us?</p> <p>Could you tell me if organisations based in Northern Ireland that invoice you/CAI for services typically include Irish VAT or not? That is an indication that might help us.</p> | <p>Christian Aid Ireland is not registered for VAT. If we engage with a supplier or consultant etc, it is for them to determine whether or not they charge VAT and the mechanism through which they do this.</p> <p>We do not generally have many organisations in Northern Ireland invoicing CAI. There have been a few non-NI UK based organisations who have not charged VAT on their invoice.</p> <p>We are sorry we can't provide any more detailed guidance on your treatment of VAT.</p> |

# Annex 1: Stream 1 Theory of Change



## Annex 2: Stream 2 (Chronic Crisis Stream) Theory of Change

**Goal:** Vulnerable communities affected by protracted humanitarian crises are protected, empowered and better connected to live more resilient and peaceful lives.

**Outcome:** The complex interconnected needs of crisis- and conflict-affected communities are met, risk of violent conflict is reduced, and resilience is fostered through integrated, people-centred approaches which put communities and civil society organisations in the driving seat. (*micro, meso, macro*)

**Objective 1 – Responding to Humanitarian Need:** The changing priority needs of the most vulnerable women, men, girls and boys in target communities are met in a way that promotes dignity and strengthens social cohesion, agency and gender equality. (*micro, meso*)

**Objective 2a – Tackling Violence and Building Peace:** Communities are engaging in transparent and inclusive peace building and conflict transformation processes and their efforts are linked to regional and national initiatives. (*micro, meso*)

**Objective 2b – Tackling Gender-based Violence:** Women, men and duty bearers in target communities individually and collectively tackle harmful gender norms and inequalities and survivors of GBV receive appropriate care and support. (*micro, meso, macro*)

**Objective 3 – Strengthening Resilience:** Target communities have strengthened capacity (including better connections) to prevent, anticipate, organise for and adapt to crises and risks related to conflict, violence and the environment in an inclusive and equitable way. (*micro, meso*)

### **In a context where<sup>1</sup>:**

1. Despite strong anecdotal and experience-based body of evidence supporting the need for stronger long-term partnerships and increasing leadership by local and national actors, insufficient investment continues to hinder the effectiveness of humanitarian, development and peacebuilding interventions and limits the sustainability of local and national actors beyond the immediate crisis.
2. Crises related to conflict, climate change and communicable diseases are worsening, increasingly complex and protracted, and demand comprehensive solutions, are responded to with emergency relief, development and peacebuilding interventions that have limited complementarity and coherence, with actors working largely in silos.
3. Real progress and change on localisation, including relating to participation<sup>2</sup>, remains modest and there is growing frustration among crisis-affected communities that top-down approaches to aid are not having the desired impact by continuing to exclude communities, especially marginalised groups, from decision-making processes.

---

<sup>1</sup> The following points of the CCS Theory of Change should be read in sequential order, e.g. point 1 of “In a context where...”, relates to point 1 of “If Christian Aid, through the CCS programme...”, relates to point 1 of “Then...”, relates to point 1 of “Because...”, etc.

<sup>2</sup> ‘Participation Revolution’ is one of the seven dimensions of Localisation. See *Localisation in Practice – The Seven Dimensions of Localisation*, GMI, June 2018

4. Violence and violent conflict are rife, including gender-based violence, human rights abuses are widespread and recent advancement of human rights are being reversed, especially those of women and girls, and there is limited access to protection and other forms of support.
5. In the face of declining aid, there is a growing need to connect the realities on the ground with meso- and macro-level structures to bring about systemic change, widen the reach of benefits and sustain improvements.
6. There is a combination of multiple risks and short- and long-term challenges, and the operating environment can change rapidly, often dramatically, and with wide-ranging impacts.

**If Christian Aid, through the CCS programme:**

1. Works with and offers core support to civil society organisations, including women-led organisations, who have invaluable expertise and knowledge at grassroots level and who have built trust with local communities.
2. Provides targeted inclusive and integrated support on humanitarian action, peacebuilding and resilience building based on community-identified needs, and CAI and partner expertise and focus.
3. Supports community-led and self-help initiatives that maximise the agency, contributions and impact of communities in ways that build resilience and social cohesion in an inclusive and equitable way.
4. Identifies and raises awareness of the root causes and drivers of violent conflict, promotes transparent and inclusive peacebuilding processes at local level, and provides appropriate services and support to GBV survivors.
5. Proactively creates and promotes linkages and coordination between local civil society organisations and their communities with other actors, networks and stakeholders at the local, regional and national levels to reduce humanitarian need and build resilience through collaborative action.
6. Offers and makes referral for a range of services that are responsive and adaptive to shifting needs, taking a fully integrated triple nexus approach, that provides structured, flexible programming based on a process of continuous analysis and learning

**Then:**

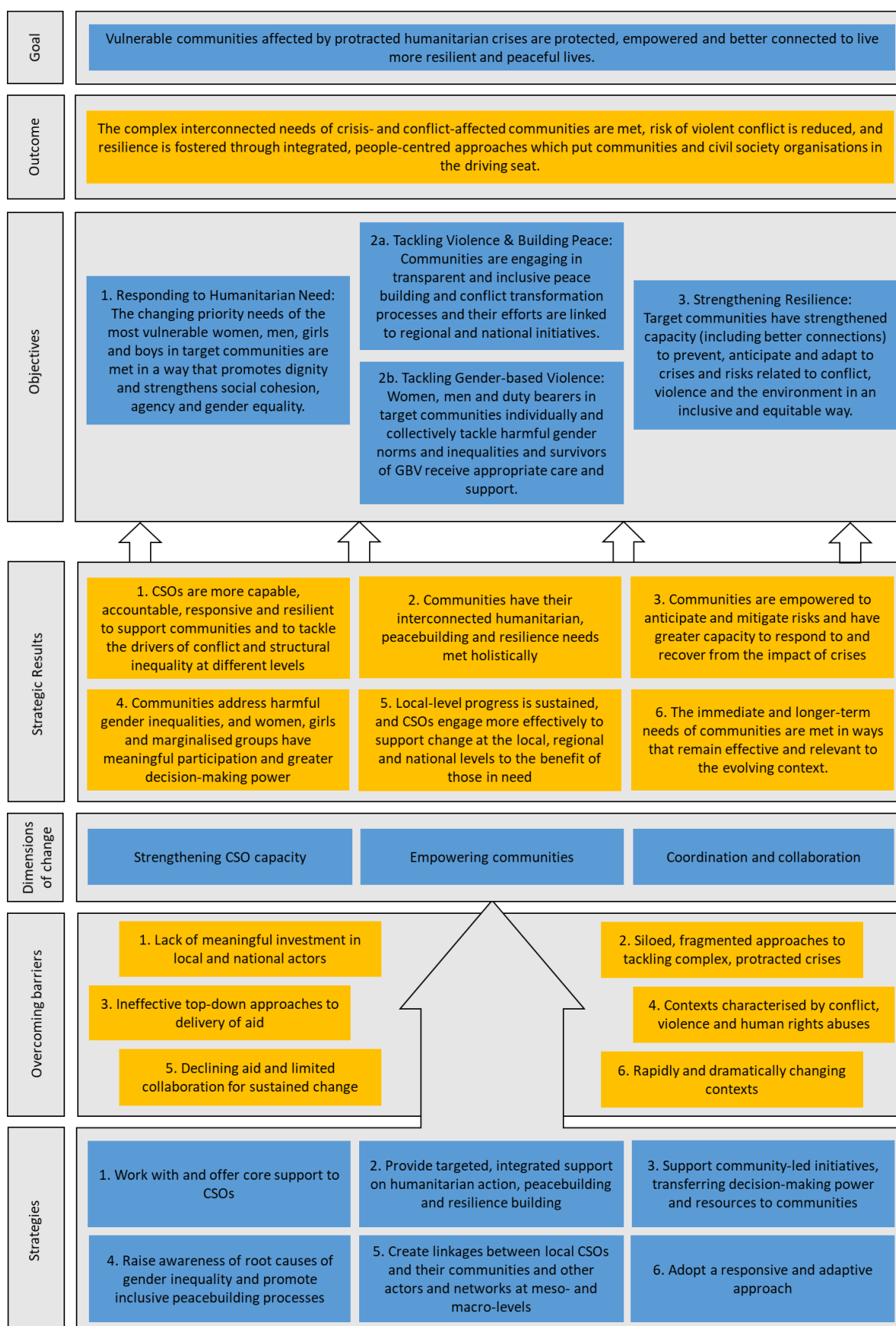
1. Civil society organisations are more capable, accountable, legitimate, responsive and resilient and therefore better able to support crisis-affected communities and to engage and collaborate at different levels more constructively to tackle the drivers of conflict and structural inequality, both during and after the programme timeframe.

2. Communities will have their immediate survival and protection needs met, will have the capacity to prevent and respond to conflict, and to achieve longer term impact addressing root causes of vulnerability.
3. Communities are empowered to prevent, anticipate and mitigate the risk of conflict and violence, climate change and communicable diseases, and have greater capacity to respond to, cope with, adapt and recover quickly from the impact of crises.
4. Communities will address harmful gender inequalities, and women, girls and marginalised groups will have meaningful participation and greater decision-making power, with the agency to support more just and inclusive societies.
5. Progress at the local level is protected and sustained, and civil society organisations will engage more effectively to support change at the micro (community), meso (regional) and macro (national) levels to the benefit of those in need.
6. The immediate and longer-term humanitarian, peacebuilding and resilience needs of communities are met in ways that are effective and relevant to the evolving, fragile and conflict-affected contexts.

**Because (assumptions):**

1. Civil society organisations (and their communities) will have had their agency enhanced to adapt to and navigate complex and challenging contexts, they will have become more resilient and will realise their full potential.
2. A triple nexus approach has built on the mutually reinforcing complementarities of these spheres of work (HDP nexus) to address the needs of communities holistically and strengthened their resilience to prevent, adapt and respond to crises, including conflict.
3. Decision-making power and resources have been transferred to vulnerable and marginalised individuals and communities affected by crises who have increased ability to meet their needs as determined by them.
4. Harmful social norms and beliefs have been tackled and the culture of direct and structural violence against women and marginalised groups is challenged
5. Local humanitarian processes will be more responsive to meet the needs of communities and the efforts of civil society will be better integrated and more coordinated to uplift the voices of communities
6. A continuous process of critical reflection and structured adaptability will have enhanced the capacity of partners and communities to prevent and respond to emerging needs and crises

**Diagram:**



## Annex 3: Stream 1 Summary of Results Framework

### Stream 1: Summary of Results Framework

| Outcome |   | Number of cases of change  |
|---------|---|--|
| 1       | <b>Objective:</b> Rights Holders (women, men, groups, organisations, communities and peoples) are taking action to advance their rights | <p><b>1a:</b> Number of targeted Rights Holders that are taking action to advance their rights</p> <p><b>1b:</b> Number (%) of targeted Rights Holders who report a change in their situation as a result of direct programme support</p> <p><b>1.1a:</b> Number of targeted Rights Holders that the programme has supported (disaggregated)</p> |
| 2       | <b>Objective:</b> Duty Bearers, decision-makers, & decision-influencers and power holders are taking action                             | <p><b>2:</b> Number and type of targeted duty bearers, decision-makers, power holders &amp; decision-influencers who have taken action (positive or negative)</p> <p><b>2.1:</b> Number &amp; type of duty bearers, decision-makers, &amp; decision-influencers and power holders that the programme is engaging</p>                             |
| 3       | <b>Objective:</b> Partner organisations have increased agency; they are stronger, can do more and can relate better                     | <p><b>3a:</b> Partner organisations with institutional change as a result of CA support (currently monitored through cases of change)</p> <p><b>3.1a:</b> Number of partner organisations supported with capability, advocacy and solidarity support</p>   |
| 4       | Objective (varies per country): Individuals (women, men, youth) and communities are more resilient to the effects of climate change     | <p><b>4a:</b> Types of changes experienced by communities</p> <p><b>4.1a:</b> Country specific indicators regarding uptake of practices and engagement of Power Holders in climate change resilience strategies</p>  |